

MaxMotion

IEC PERFORMANCE DATA SHEET IEC Efficiency Level IE3

Catalog #: **IJC200L3-4-47**

HP	kW	Voltage	L.R. Amps	Efficiency	Power Factor	Service Factor	Frame	Design
50,00	37,30	460 / 796	427,68	94,5%	0,86	1,15	200L	N

60 Hz								
FLA							Is/In	F.L. RPM
208	230	333	460	575	796	990		
/	/	/	57,10	/	33,00	/	7,49	1780

50 Hz								
FLA						Efficiency	Is/In	F.L. RPM
190	380	400	415	660	725			
/	69,60	66,12	63,70	40,10	36,50	93,9%	7,5	1485

Wgt. Lbs	PH	Duty	Insul. Class	Ambient Temp.	Elevation	Temp. Rise° C
727	3	S1	H	40°C	1000 M	70

% Efficiency		% Power Factor		Torque			Protector Type	Winding Resist. Ω
Full Load:	94,5%	Full Load:	0,86	FLT ft.lbs	60Hz	50Hz		
3/4 Load:	93,9%	3/4 Load:	0,84	LRT %	211	211	PTC-150°C	0,09152
1/2 Load:	93,1%	1/2 Load:	0,78	BDT %	235	235		

Rotor Inertia Wk2 Lb-Ft2	Max Load Inertia Wk2 Lb-Ft2	Shaft Material	Frame Material	DE Bracket Type	ODE Bracket Type	Mounting	Enclosure	Protection
-	-	Standard	Cast Iron	Standard	Standard	B3	TEFC	IP55

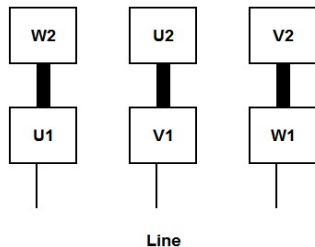
Ball Bearings		Grease	Mount Type	Orientation	Cold Start (Secs)	Paint
DE	ODE					
6312-C3	6312-C3	Mobil PolyRexEM	Rigid	Horizontal	15	Red

Inverter Duty. Motor meets MG1 parts 31.4.4.2	Constant Torque Range	Variable Torque Range
	10:1	20:1

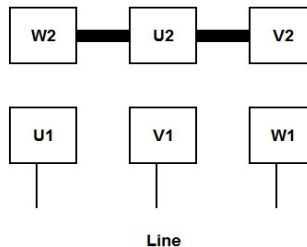
WIRING CONNECTION DIAGRAM : E

IEC Frames 200L - 355L, Dual Voltage
460 / 796 VAC, 6 posts, 6 leads, Δ / Y Connection

Low Voltage (460 Vac)
6 Leads Δ 6 posts



High Voltage (796 Vac)
6 Leads Y 6 posts



Date: **25 janvier, 2024**
 Customer: _____
 Contact: _____
 Submittee: **J.C. Lavallée**

Catalogue #: **IJC200L3-4-47**

IEC Efficiency Level IE3											
HP	Kw	VAC	RPM	Enclosure	Frame	Frequency	Design	Poles	LR Is/In	Insulation Class	Temp. Rise °C
50,00	37,30	460 / 796	1780	TEFC	200L	60	N	4	7,49	H	70

Load %	0%	25%	50%	75%	100%	125%	150%
Amps	46,12	46,12	50,51	52,71	57,10	65,88	83,45
Torq ft/lbs	0	36,57	73,35	110,34	147,53	192,29	246,98
RPM	0	1795	1790	1785	1780	1707	1595
Eff %	0	69,6	93,1	93,9	94,5	92,0	84,6
PF %	0	39,3	77,5	84,4	86,0	88,6	90,3

	Locked Rotor	Pull-Up	Breakdown	Rated Load	Idle	Duty	S. F.	Ambient	Elevation	dBA @ 1M
Speed (RPM)	0	810	1350	1780	1800	S1	1,15	40°C	3,300 ft	-
Current (Amps)	427,68	342,14	239,50	57,10	46,12	VFD Rating: Meets MG1 parts 31.4.4.2				
Torque (ft-lbs)	311,28	264,59	346,69	147,53	0,0	CT :	10:1	VT :	20:1	

